



Patiobolt

The deadlocking bolt

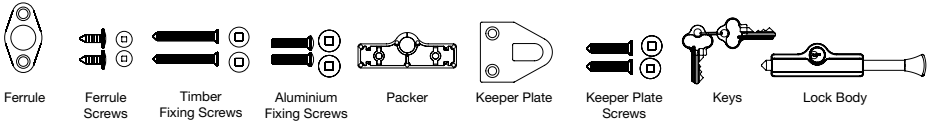


Patiobolt MC82: For use with sliding and hinged aluminium, timber or uPVC doors.

Operation: Key lockable bolt provides push to bolt and key to deadlock operation.

Application: Provides safe bolting or secure deadlocking of most types of doors.

Components



Fixing Instructions

1

Sliding Doors

Inward Opening Doors. Use with Keeper Plate.

Garage or Shed Doors. Use with Keeper Plate.

French Doors

Option 1
Fit bolt to top and bottom of last closing door

Option 2
Fit bolt to top and bottom of both doors

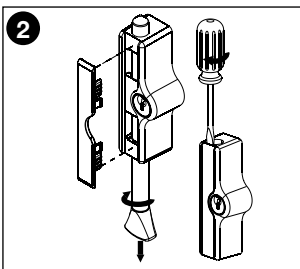
Determine fixing location

Select mounting position, refer to diagrams above. Hold assembled lock in desired mounting position and check for:

- Orientation of lock body (bolt can be inserted from either end)
- Bolt movement - may use drilled hole with ferrule, or keeper plate (when bolt doesn't engage door frame)
- When using a 5 pin key (refer step 4), use either the 4mm packer or drill a 16mm clearance hole of 5mm depth to accommodate point of the key.

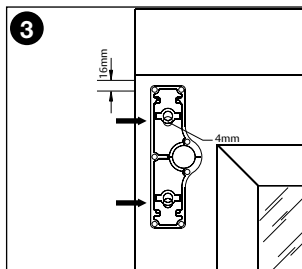
Extra Clearance - For extra clearance and strength it may be necessary to use the packer for optimal bolt engagement.

Sliding Door Applications - avoid fitting bolt at bottom of the door to ensure that the bolt hole does not penetrate the sill or sill flashing as it may result in a water leak.



Remove bolt and screw cover

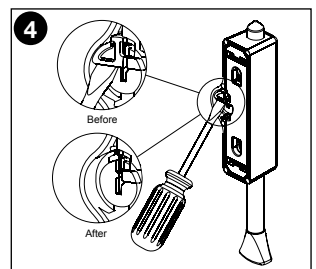
With unit unlocked remove bolt with twist and pull action. Remove cover by twisting a flat head screwdriver in the end slots.



Mark fixing screw locations through packer

Check clearance of screws with glass line and ensure bolt will not interfere with frame in the unlocked position (Leave at least 16mm clearance between top of body and frame). Drill two 4mm pilot holes to suit fixing screws where marked.

Drilling Holes Accurately - We recommend centre punching holes prior to drilling.



Remove key stop for 5 pin key

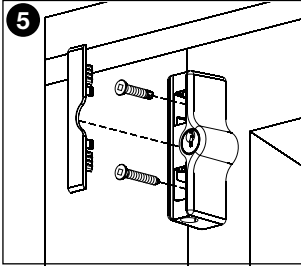
Note: Optional - this step is not required if using the key supplied in the pack.

When using a 5 pin key (keyed alike with door locks), snap off triangular cylinder stop, on the back of product using a flat screwdriver as shown and mount lock either using the 4mm packer or by drilling a 16mm clearance hole to provide rear clearance for longer key.



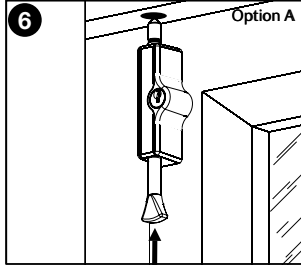
Patiobolt

The deadlocking bolt



Attach lock to frame

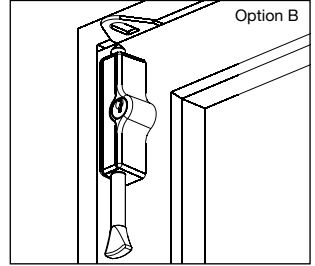
Screw lock body into position using the appropriate screw for the frame material. Replace bolt, check operation and refit screw cover.
 Note: The timber screw has a sharp point and the aluminium screw has a flat tip.



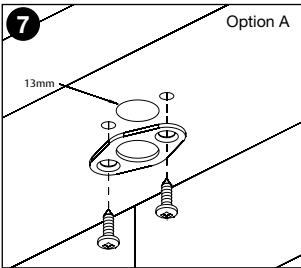
Mark and drill bolt / keeper plate holes

Ferrule (Option A)
 With door firmly closed, tap end of bolt to mark drilling location and drill 13mm diameter hole, deep enough for full movement of bolt.

If the ferrule is not to be fitted, drill a 10mm diameter hole.



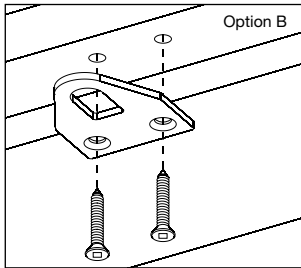
Keeper Plate (Option B)
 (For use when bolt doesn't engage door frame). With door firmly closed, position keeper plate over locked bolt and mark location.



Fit ferrule (Option A)

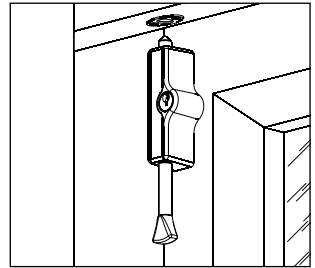
Hold ferrule in position and mark fixing locations. Drill two 2.5mm pilot holes to suit fixing screws and fix ferrule in position.

For secure ventilation of Sliding Doors and Windows - We suggest drilling an extra bolt hole 100mm from first. Additional ferrules are available from most Locksmiths and Hardware stores.



Fit keeper plate (Option B)

Hold keeper plate in position and mark fixing locations. Drill two 3mm pilot holes to suit fixing screws and fix keeper plate in position.



Check operation

Ensure bolt engages fully so that key can be locked. Pull bolt out to unlocked position and open door to check that bolt remains clear of obstacles throughout swing of door.

10 Year Warranty

The warranty covers manufacturing defects, standard finishes but excludes plated finishes or finishes exposed to a corrosive environment. The warranty excludes damage caused by installation contrary to written instructions and incidental or consequential damage. We recommend regular cleaning with mild detergent.



CYL4: With One Key Security you can use a single key to operate all the locks in your home. This lock can be supplied keyed alike in any quantity and keyed alike to a variety of ASSA ABLOY locks including most similar products of other makes. Get one key convenience simply by asking your retailer.

ASSA ABLOY New Zealand Limited
 6 Armstrong Road, Albany
 Auckland 0632, New Zealand
 www.yalelock.co.nz

For customer feedback: info.nz@assaabloy.com



Patent: NZ 326495, AU 727454, GB 2325021